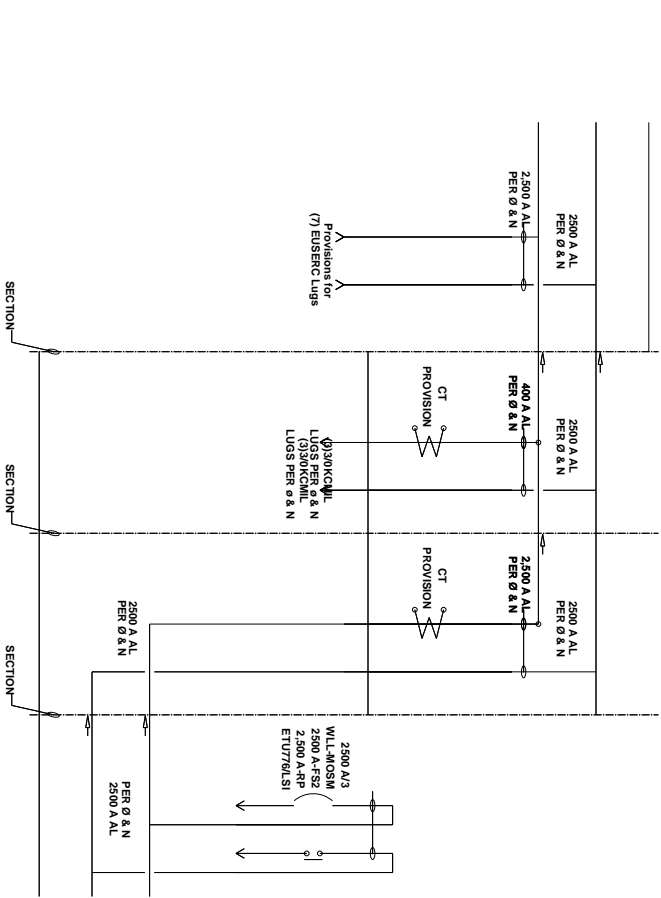


**NOTES**

- CONSTRUCTION: SWITCHBOARD IS BUILT AND LABELED PER UL 891 IN EFFECT.
- INCOMING: AMPERES: 2,500
- SERVICE: SYSTEM VOLTAGE: 480/277 3ØW/4W AC
- INTERRUPTING: THE SHORT CIRCUIT INTERRUPTING CAPABILITY IS 65,000 RMS SYMMETRICAL AMPERES AT 480 VOLTS BASED ON THE LOWEST SHORT CIRCUIT RATING
- ENCLOSURE: THIS SWITCHBOARD IS CONSTRUCTED TO WITHSTAND AND FAULTS OF 65,000 RMS SYMMETRICAL AMPERES. ENCLOSURE IS TYPE NEMA 3R FOR OUTDOOR APPLICATION.
- ENCLOSURE SHALL BE CONSTRUCTED TO MEET SEISMIC REQUIREMENTS.
- SEISMIC: ANSI 61 LIGHT GREY PAINT.
- TERMINATIONS: TERMINATIONS ARE ACCESSIBLE FROM THE FRONT.
- EXTERIOR: TIN PLATED ALUMINUM BUS BARS SIZED ON BASIS OF 65°C MAXIMUM TEMPERATURE RISE.
- BUS BARS: THE GROUND BUS IN THIS SWITCHBOARD IS ALUMINUM SIZED PER UL 891 OR GREATER.
- BUS BARS: PORTLAND GEN ELEC WITH ADHESIVE NAMEPLATES ATTACHED TO THE FRONT.
- UTILITY: NAMEPLATES ATTACHED TO THE FRONT.
- SECTION SKIDS: SPECIAL SHIPPING SKIDS REQUIRED FOR LARGE SECTIONS.

**ABBREVIATIONS**

- 'UL' INDICATES THAT THE MARKED SWITCHBOARD SECTION COMPLETES WITH ALL APPLICABLE UNDERWRITERS LABORATORIES STANDARDS AND IS IDENTIFIED WITH A UL LABEL.
- 'USE' INDICATES THAT THE MARKED SWITCHBOARD SECTION IS SUITABLE ONLY FOR USE AS SERVICE ENTRANCE EQUIPMENT.
- 'MOSH' INDICATES A MANUALLY OPERATED STATIONARY MOUNTED BREAKER.
- 'DAS' INDICATES DYNAMIC ARC FLASH SENTRY OR ARC ENERGY REDUCTION MADE WHICH COMPLES WITH NEC 240.87



NO.	REVISIONS	CRW/gfd	DATE
1	0	CRW/gfd	11-5-2020

**Siemens Industry, Inc.**

**SW Park APTS**

**CRESCENT ELECTRIC SUPPLY COMPANY**

DATE: 11-5-2020  
 BY: CRW/gfd  
 DESIGNED BY: MDP

PROJECT NO: 11052000.00.00.M00-20000-1

DATE: 11-5-2020  
 BY: CRW/gfd  
 SHEET 1 OF 1

**INSTALLATION NOTE**

Caution: If switchboard is installed on a housekeeping slab greater than 2-1/2" the meter may be over the 63" maximum allowable meter height. Consult utility if you need more information.

DESCRIPTION	P.O. NO.
CT COMPARTMENT	320,332
UGPS	345
LINE TERMINATION	347
METER PLATES	333
SMI METERING	330
SUPPORT	

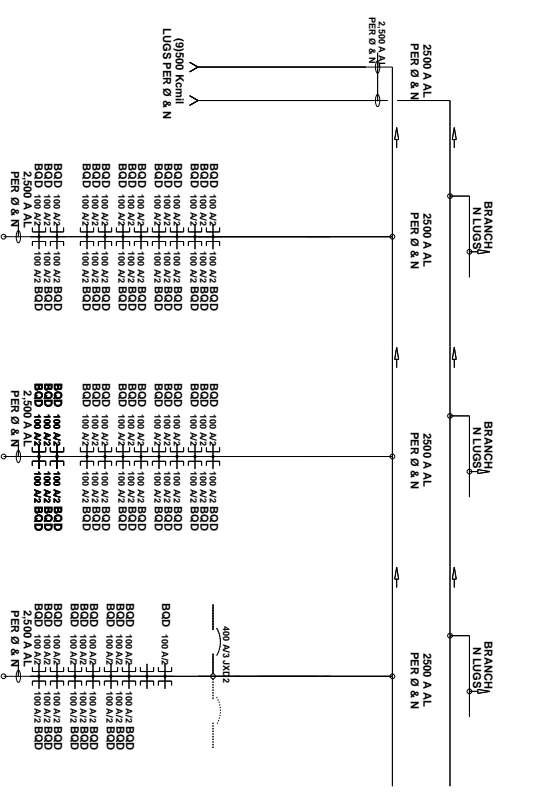
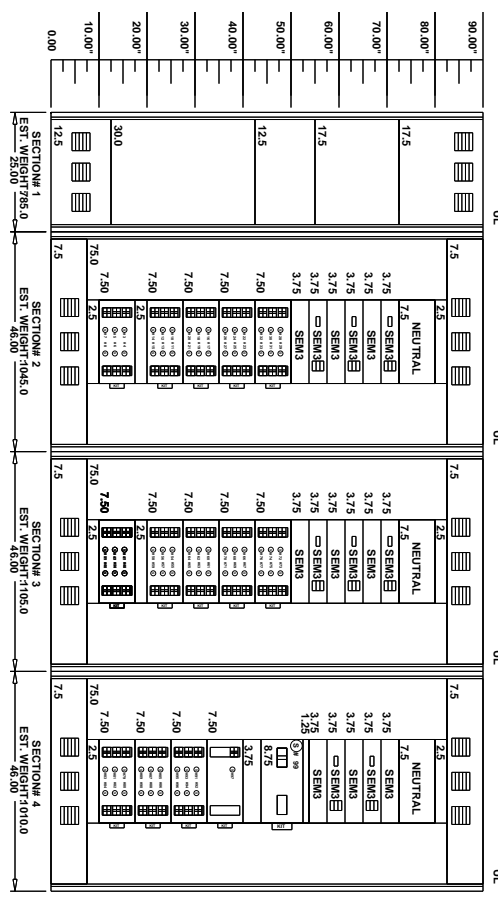
UTILITY CO.: PORTLAND GEN ELEC

- CONSTRUCTION :SWITCHBOARD IS BUILT AND LABELED PER UL 891 IN EFFECT.
- INCOMING
- SERVICE
- SYSTEM VOLTAGE: 208Y/120 3Ø4W/1Ø4 AC
- INTERRUPTING
- RATING
- THE SHORT CIRCUIT INTERRUPTING CAPABILITY IS 65,000 RMS SYMMETRICAL AMPERES AT 208 VOLTS BASED ON THE LOWEST SHORT CIRCUIT RATING AT TIME OF MANUFACTURE OF BUSING STRUCTURE. THE BUSING STRUCTURE IS CONSTRUCTED TO WITHSTAND FAULTS OF 65,000 RMS SYMMETRICAL AMPERES. ENCLOSURE IS TYPE NEMA 1 FOR INDOOR APPLICATION.
- ENCLOSURE
- TERMINATIONS
- TERMINATIONS ARE ACCESSIBLE FROM THE FRONT.
- BUS BARS
- IN PLATED ALUMINUM BUS BARS SIZED ON BASIS OF 65°C MAXIMUM TEMPERATURE RISE.
- THE GROUND BUS IN THIS SWITCHBOARD IS Aluminum SIZED PER UL 891 OR GREATER.



ABBREVIATIONS

'UL' INDICATES THAT THE MARKED SWITCHBOARD SECTION COMPLEES WITH ALL APPLICABLE UNDERWRITERS LABORATORIES STANDARDS AND IS IDENTIFIED WITH A UL LABEL.  
'UNIT SPACE' INDICATES UNOCCUPIED AREA INTENDED FOR FUTURE USE.



(PLEASE PRINT) SHEET NO. (6)

NO.	1	0	REVISIONS	CRW/gfd	11-5-2020
NO.				BY:	DATE

**Siemens Industry, Inc.**

**Sw Park APTS**

CRESCENT ELECTRIC SUPPLY COMPANY

DESIGNATION: HDP

DATE: 11-5-2020

PROJECT: Crawg0000\_11052000\_00\_00\_M00-2-1000-1

WFL LOC: SHEET 1 of 1

REV: 1