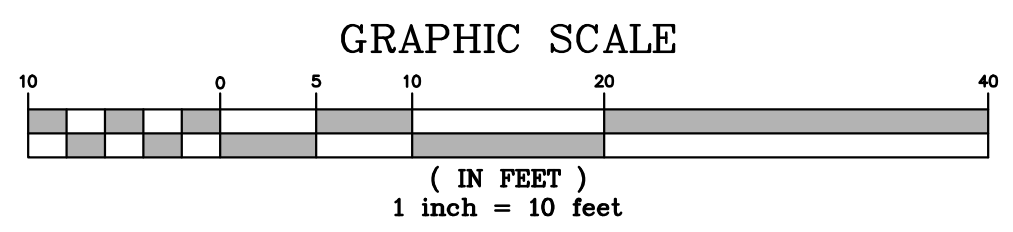
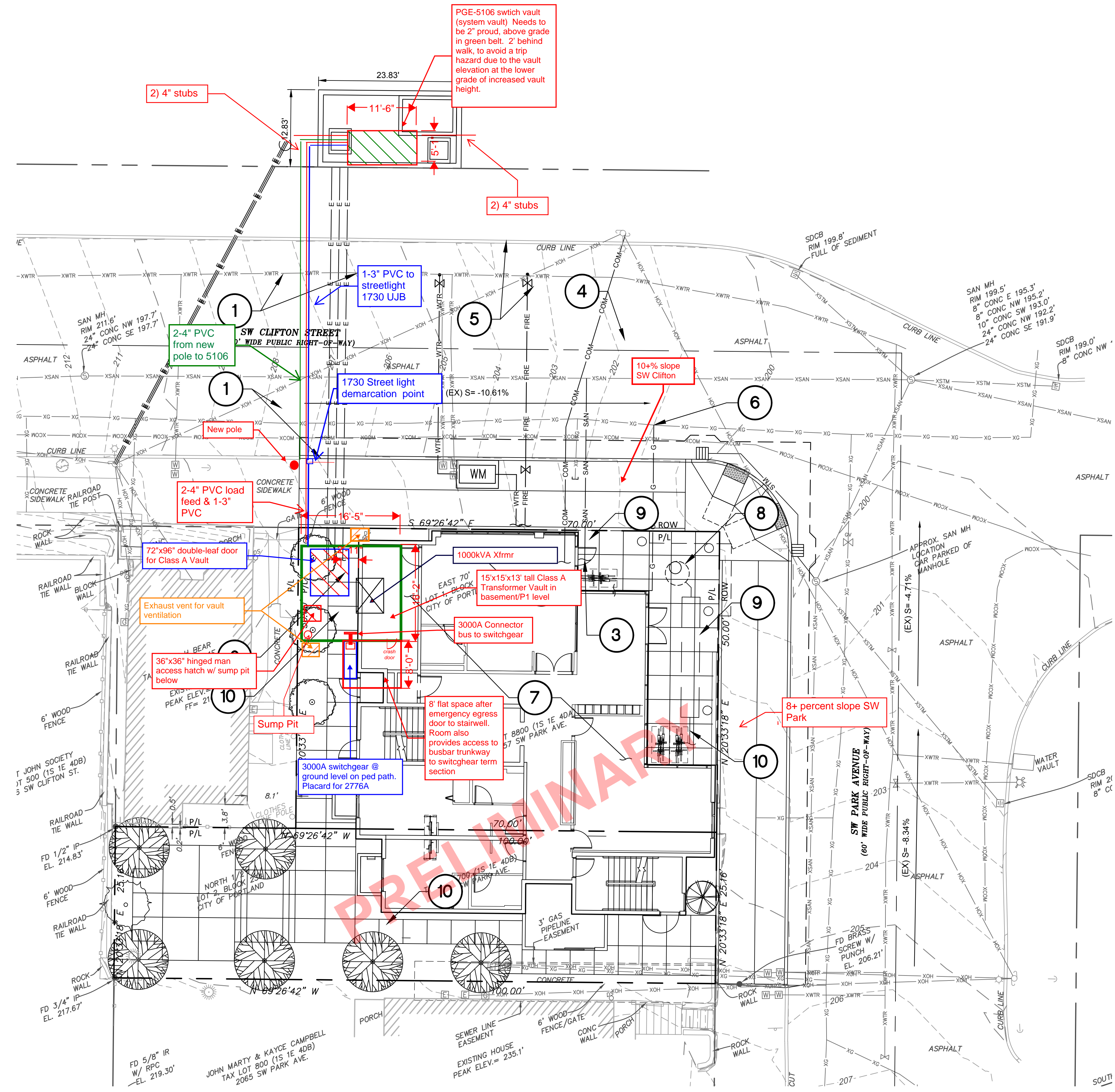


RENEWS: 12-31-2021

**WDY** Structural - Civil Engineers  
6443 SW Beaverton-Hillsdale Hwy, Suite 210 Portland, OR 97221  
ph: 503.203.8111 fx: 503.203.8122 www.wdy.com

KEYNOTES FOR THIS SHEET	
MARK	DESCRIPTION
1	FIRE NEW SERVICE AND WATER METER, VALVE AND LATERAL. DCVA AND DCDA TO BE IN BUILDING.
2	NEW DOMESTIC WATER PIPE, PROVIDE 3" (MIN) COVER. COORDINATE WITH ARCH AND PLUMBING FOR CONNECTION IN METER ROOM.
3	NEW 6" OR 8" DIA SANITARY LATERAL.
4	NEW COMM LINE.
5	NEW ELECTRIC CONDUIT AND VAULT.
6	NEW GAS LINE, CAP EXISTING PER CITY SPECS.
7	COORDINATE WITH ARCH FOR ROOF DRAIN DOWNSPOUT LOCATIONS AND CONNECT TO SITE STM AT 1.0% (MIN). PROVIDE 1.5' (MIN) COVER.
8	NEW 4" DIA 20' DEEP DRYWELL WITH 15' OF PERFORATIONS PER 1/C3.1. RIM= 200.97± IE (36"-IN) W & S= 197.47±
9	NEW 20-FOOT LONG SECTION OF 36" DIA HDPE DETENTION PIPE PER 1/C3.0. IE= 197.47±
10	NEW SITE STM. SLOPE TO DETENTION PIPE AT 1.0% (MIN).



**1** OVERALL UTILITY PLAN  
C2.1 SCALE: 1" = 10'

**SW PARK APARTMENTS**  
2061 SW PARK AVE  
PORTLAND, OR 97201  
OVERALL UTILITY PLAN

REVISIONS	DATE	DRAWN	CHECKED	JOB NUMBER	PRM	CJD
	04/16/2020			20063		

SHEET **C2.1**