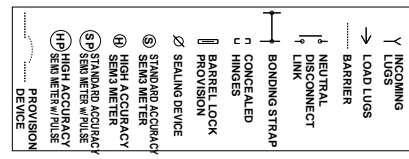


NOTES

CONSTRUCTION : SWITCHBOARD IS BUILT AND LABELED PER UL 891 IN EFFECT.
 INCOMING : AMPERES 2,000
 SERVICE : SYSTEM VOLTAGE : 480/277 3Ø4W/1Wye AC
 RATING : THE SHORT CIRCUIT INTERRUPTING CAPABILITY IS 65,000 RMS SYMMETRICAL AMPERES AT 480 VOLTS BASED ON THE LOWEST SHORT CIRCUIT RATING
 ENCLOSURE : RMS SYMMETRICAL AMPERES AT 480 VOLTS BASED ON THE LOWEST SHORT CIRCUIT RATING AT TIME OF MANUFACTURE OF BUSING STRUCTURE. THE BUSING STRUCTURE IS CONSTRUCTED TO WITHSTAND FAULTS OF 65,000 RMS SYMMETRICAL AMPERES. ENCLOSURE IS TYPE NEMA 3R FOR OUTDOOR APPLICATION.
 ENCLOSURE : ENCLOSURE SHALL BE CONSTRUCTED TO MEET SEISMIC REQUIREMENTS. SEISMIC : ANSI 6 LIGHT GREY PAINT.
 TERMINATIONS : TERMINATIONS ARE ACCESSIBLE FROM THE FRONT AND RIGHT SIDE.
 BUS BARS : TYP. PLATED ALUMINIUM BUS BARS SIZED ON BASIS OF 65°C MAXIMUM TEMPERATURE RISE.
 BUS BARS : THE GROUND BUS IN THIS SWITCHBOARD IS ALUMINIUM SIZED PER UL 891 OR GREATER.
 UTILITY : PORTLAND GEN ELEC
 SECTION SKIDS : SPECIAL SHIPPING SKIDS REQUIRED FOR LARGE SECTIONS.



ABBREVIATIONS

'UL' INDICATES THAT THE MARKED SWITCHBOARD SECTION COMPLIES WITH ALL APPLICABLE UNDERWRITERS LABORATORIES STANDARDS AND IS IDENTIFIED WITH A UL LABEL.
 'SUSE' INDICATES THAT THE MARKED SWITCHBOARD SECTION IS SUITABLE ONLY FOR USE AS SERVICE ENTRANCE EQUIPMENT.
 'MOSH' INDICATES A MANUALLY OPERATED STATIONARY MOUNTED BREAKER.
 'GFT' INDICATES GROUND FAULT TRIP.
 'DAS' INDICATES DYNAMIC ARC FLASH SENTRY OR ARC ENERGY REDUCTION MODE WHICH COMPLIES WITH NEC 240.87

INSTALLATION NOTE

Caution: If switchboard is installed on a housekeeping slab greater than 2-1/2" the meter may be over the 63" maximum allowable meter height. Consult utility if you need more information.

DESCRIPTION	P.O. NO.
CT COMPARTMENT	322
UGPS	345
LINE TERMINATION	347
METER PLATES	332
SMM METERING	330

SW Park APTS

1	0	REVISEMENTS	DATE	BY:
		DRAWN		
		CHKD BY:		
		DATE		

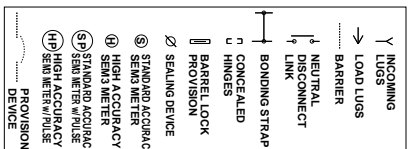
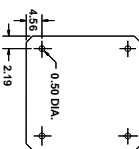
Siemens Industry, Inc.

CRESCENT ELECTRIC SUPPLY COMPANY
 RESIDENTIAL SERVICE

1 of 1

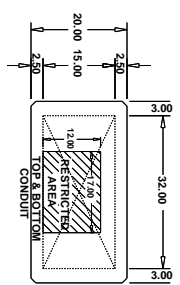
NOTES

- CONSTRUCTION: SWITCHBOARD IS BUILT AND LABELED PER UL 891 IN EFFECT.
- INCOMING
- AMPERES: 2,000
- SYSTEM VOLTAGE: 208Y/120 3Ø4W/1Yø AC
- INTERRUPTING
- RATING
- RMS SYMMETRICAL AMPERES AT 208 VOLTS BASED ON THE LOWEST SHORT CIRCUIT INTERRUPTING CAPABILITY IS 65,000
- AT TIME OF MANUFACTURE OF BUSING STRUCTURE, THE BUSING STRUCTURE IS CONSTRUCTED TO WITHSTAND FAILURES OF 65,000 RMS SYMMETRICAL AMPERES.
- ENCLOSURE IS TYPE NEMA 1 FOR INDOOR APPLICATION.
- ENCLOSURE SHALL BE CONSTRUCTED TO MEET SEISMIC REQUIREMENTS.
- SEISMIC
- TERMINATIONS ARE ACCESSIBLE FROM THE FRONT.
- BUS BARS
- BUS BARS
- TEMPERATURE RISE
- THE GROUND BUS IN THIS SWITCHBOARD IS ALUMINUM SIZED PER UL 891 OR GREATER.

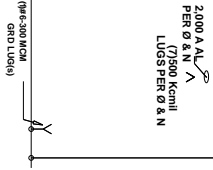
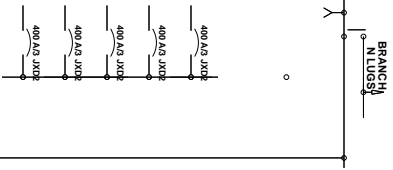
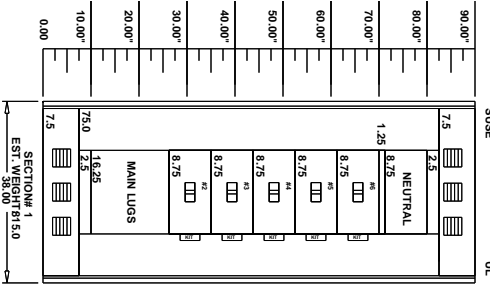


ABBREVIATIONS

- 'UL' INDICATES THAT THE MARKED SWITCHBOARD SECTION COMPLIES WITH ALL APPLICABLE UNDERWRITERS LABORATORIES STANDARDS AND IS IDENTIFIED WITH A UL LABEL.
- 'USE' INDICATES THAT THE MARKED SWITCHBOARD SECTION IS SUITABLE ONLY FOR USE AS SERVICE ENTRANCE EQUIPMENT.
- 'UNUS. SPACE' INDICATES UNUSABLE SPACE NOT INTENDED FOR FUTURE USE.
- 'B' INDICATES A SERVICE BARRIER.



Supply = 2000
Section = 2000
Neutral = 2000



NO.	REVISIONS	DRAWN BY:	DATE
1	0	chwgprf zzzjzj	12-22-2020

SW Park APTS

Siemens Industry, Inc.

Northcross, Georgia

DATE: 12-22-2020

BY: HDP

DESIGNATION: HDP

PROJECT: SW Park APTS

WFL LOC: SW Park APTS

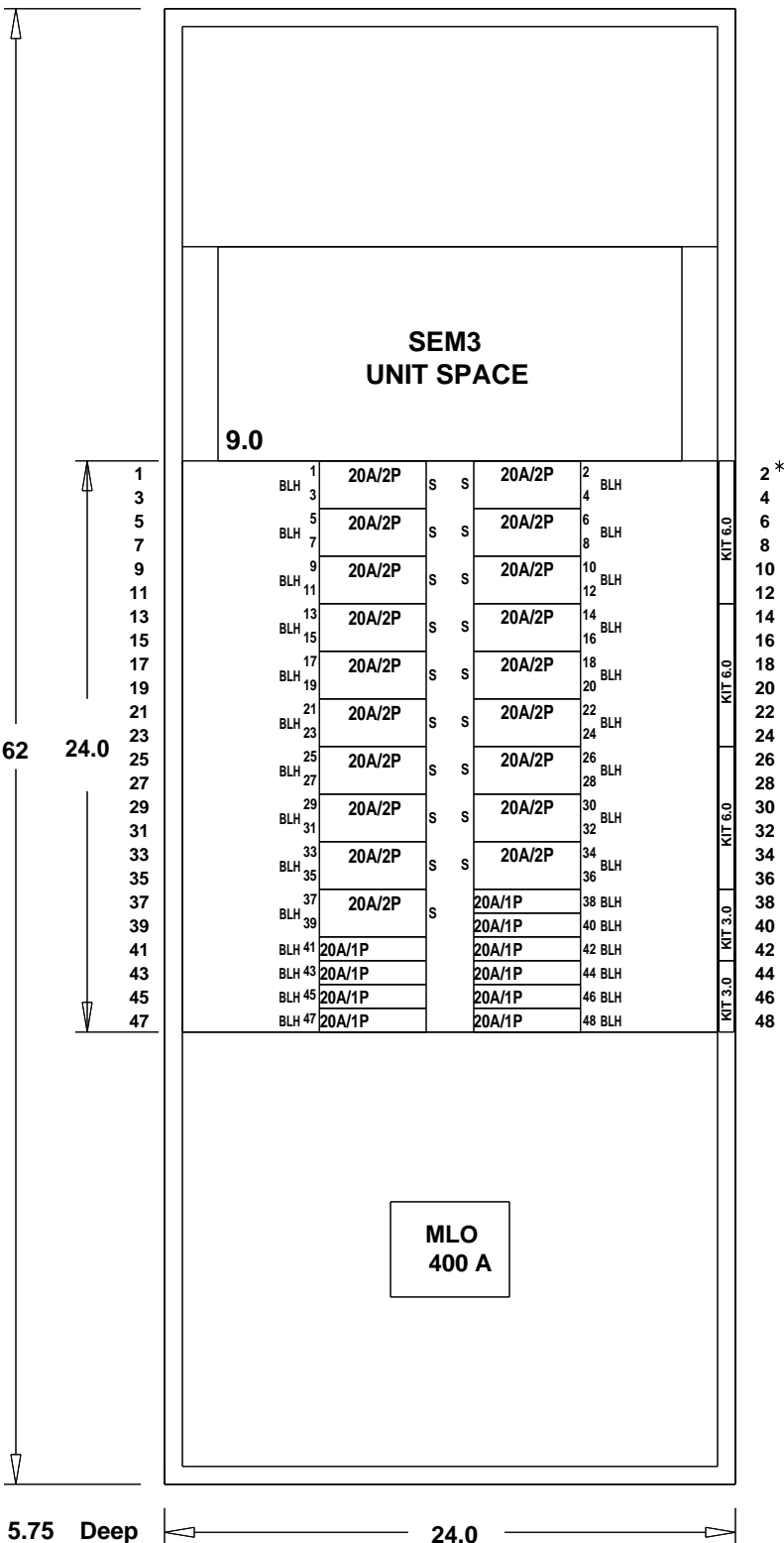
DATE: 12-22-2020

WFL LOC: SW Park APTS

SHEET 1 of 1

REV: 1

SECTION :1 OF 1
 PANEL TYPE :P2
 CATALOG NUMBER :P2C54ML400ABS
 ENCLOSURE :1 Indoor
 SYSTEM VOLTAGE :208Y/120 3Ø 4W Wye AC
 IR RATING :22 K AIC
 MAIN BUS :400 A
 BUS MATERIAL :Tin Plated Aluminum
 FEED :Bottom
 MOUNTING :Surface
 SE LABEL :No
 SERIES RATED :No
 CONDUIT AREA :N/A
 *INDICATES POSITIONING NUMBERS TO HELP WITH THE MANUAL PLACEMENT OF BREAKERS ON THE MECHANICAL VIEW



PANELBOARD COMPONENTS

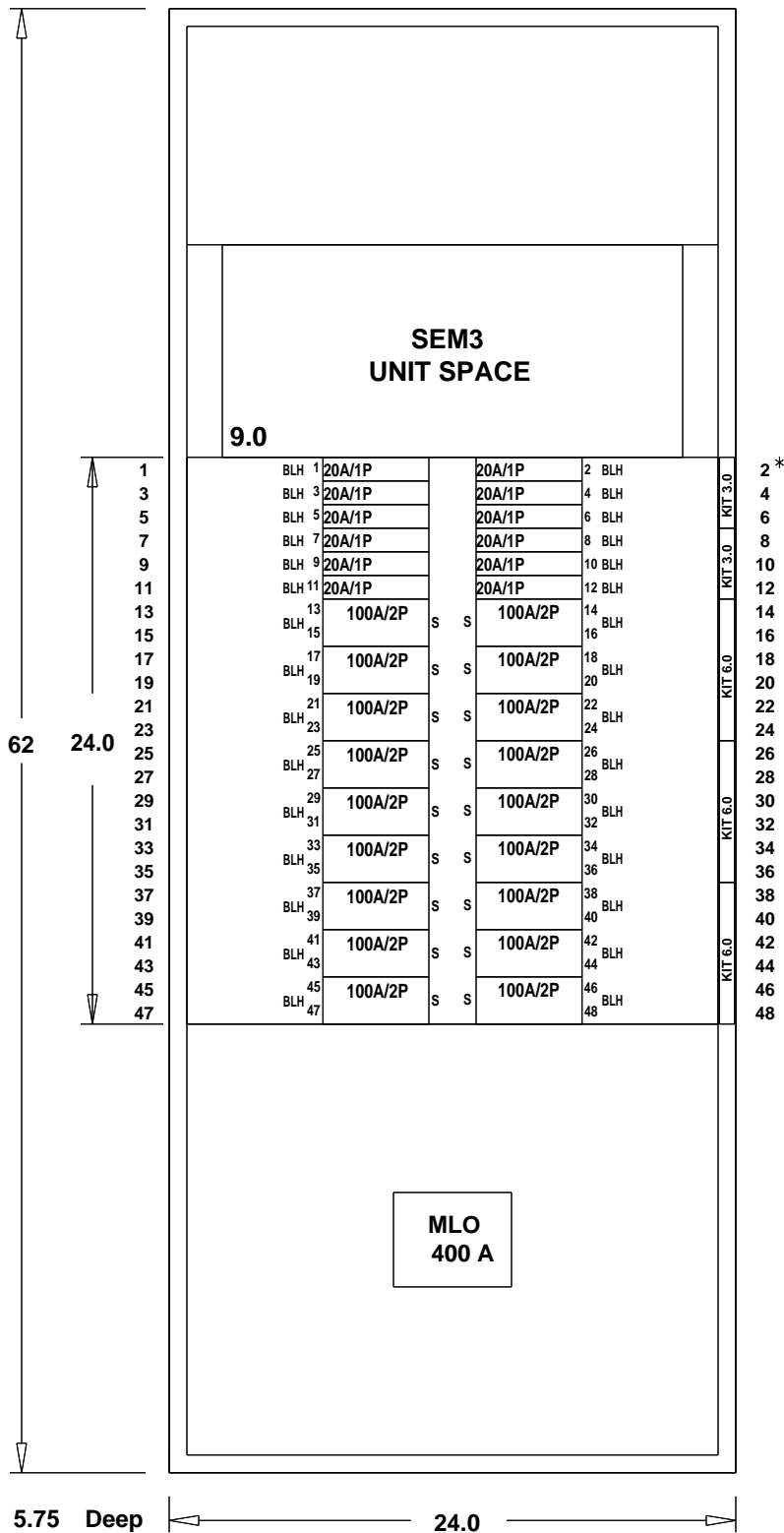
Main :
 1 - 400A MAIN LUG
 1-(1)4/0-600Kcmil

Branches :
 19 - 20A /2P-BLH
 1-2-Pole, 1% Accuracy Meter
 1-(2) 50 Amp CTs
 10 - 20A /1P-BLH

Options :
 1-Master NP Secured -Adhesive
 1-Certification - UL
 1-Std Al/Cu Gnd Connector
 1-(2) 21 Position Meter Rack
 1-SEM3 Controller
 1-SEM3 Panelboard

				JOB SW Park APTs			
P.O. -				CUST. CRESCENT ELECTRIC SUPPLY COMPANY			
CONTR. -				CONSULT -			
TIE -				BY crawgd		ENG. LOC. -	
S.O. -				DATE 12-22-2020		DESIGNATION METER PANEL 2	
1				0		crawgd122220	
				12-22-2020		DWG. NO. crawgd000_11052000_00_01_M00-29000-1	
NO.				REVISIONS		DRAWN BY	
				DATE		Siemens Industry, Inc.	
				Norcross, Georgia		APP. MFG. LOC.	
				APP. DWG. FILE		SHEET 1 OF 1	
						REV. 1	

SECTION :1 OF 1
 PANEL TYPE :P2
 CATALOG NUMBER :P2C54ML400ABS
 ENCLOSURE :1 Indoor
 SYSTEM VOLTAGE :208Y/120 3Ø 4W Wye AC
 IR RATING :22 K AIC
 MAIN BUS :400 A
 BUS MATERIAL :Tin Plated Aluminum
 FEED :Bottom
 MOUNTING :Surface
 SE LABEL :No
 SERIES RATED :No
 CONDUIT AREA :N/A
 *INDICATES POSITIONING NUMBERS TO HELP WITH THE MANUAL PLACEMENT OF BREAKERS ON THE MECHANICAL VIEW



PANELBOARD COMPONENTS

Main :
 1 - 400A MAIN LUG
 1-(1)4/0-600Kcmil

Branches :
 18 - 100A /2P-BLH
 1-2-Pole, 1% Accuracy Meter
 1-(2) 125 Amp CTs
 12 - 20A /1P-BLH

Options :
 1-Master NP Secured -Adhesive
 1-Certification - UL
 1-Std Al/Cu Gnd Connector
 1-(2) 21 Position Meter Rack
 1-SEM3 Controller
 1-SEM3 Panelboard

				JOB SW Park APTs			
				P.O. -		CUST. CRESCENT ELECTRIC SUPPLY COMPANY	
				CONTR. -		CONSULT -	
				TIE -		BY crawgd	
				S.O. -		DATE 12-22-2020	
				DWG. NO.		DESIGNATION METER PANEL 4	
				crawgd000_11052000_00_01_M00-30000-1			
				Siemens Industry, Inc.			
				APP.		MFG. LOC.	
				APP.		DWG. FILE	
				SHEET 1 OF 1		REV. 1	
NO.		REVISIONS		DRAWN BY		DATE	
1		0		crawgd122220		12-22-2020	
				Norcross, Georgia			