

PLUMBING LEGEND	
AFF ABOVE FINISHED FLOOR
ARCH ARCHITECTURAL
B.G. BELOW GRADE
BTU BRITISH THERMAL UNIT
CAP. CAPACITY
C.I. CAST IRON
COMP. COMPARTMENT
CONT. CONTINUATION
CU. CUBIC
DF DRINKING FOUNTAIN
DI DEIONIZED (WATER)
DIA. DIAMETER
ELEV. ELEVATION
EWC ELECTRIC WATER COOLER
FD FLOOR DRAIN
FDC FIRE DEPARTMENT CONNECTION
FHC FIRE HOSE CABINET
F.F. FINISH FLOOR
FLG. FLANGE
FOOT FOOT / FEET
G GAS
GALV. GALVANIZED
GPM GALLONS PER MINUTE
G.V. GATE VALVE
HP HORSEPOWER
HR. HOUR
I.E. INVERT ELEVATION
KW KILOWATT
LAV LAVATORY
LBS POUNDS
MAX. MAXIMUM
MBH THOUSANDS OF BTUs PER HOUR
MIN. MINIMUM
M.J. MECHANICAL JOINT
N.I.M. NOT IN MECHANICAL
OS&Y OUTSIDE STEM & YOKE
PROT. PROTECTION
PSI POUNDS PER SQUARE INCH
PSIG PRESSURE / TEMPERATURE
P/T REQUIRED
REG'D REDUCED PRESSURE BACKFLOW PREVENTER
RPBP REVOLUTIONS PER MINUTE
RPM TYPICAL
TYP. URINAL
UR VENT THROUGH ROOF
VTR WATER CLOSET
WC WATER CLOSET
 (CW) COLD WATER
 (NPW) NON-POTABLE COLD WATER
 (HW) HOT WATER
 (HWR) HOT WATER RECIRC
 (W) ABOVE GRADE WASTE
 (W) BELOW GRADE WASTE
 (V) VENT
 (RD) RAIN DRAIN
 (UG RD) UNDERGROUND RAIN DRAIN
 (OD) OVERFLOW RAIN DRAIN
 NEW WORK ENTITY
 (D) DEMOLISH, (R) RELOCATE
 (E) EXISTING ENTITY
 (CW) EXISTING COLD WATER
 (HW) EXISTING HOT WATER
 (HWR) EXISTING HOT WATER RECIRC
 (W) EXISTING WASTE BELOW GRADE
 (V) EXISTING VENT
 (RD) EXISTING RAIN DRAIN
 BACKGROUND
 PRESSURE/TEMP RELIEF VALVE
 BUTTERFLY VALVE
 GAS PRESSURE REGULATING VALVE
 TOP CONNECTION
 BOTTOM CONNECTION
 PIPE TURNED UP, PIPE TURNED DOWN
 GATE VALVE
 BALL VALVE
 BALANCING VALVE
 CHECK VALVE
 UNION
 DOUBLE CHECK ASSEMBLY
 EQUIPMENT MARK NUMBER
 FIXTURE MARK
 EXISTING
 NOTE
 CONNECT TO EXISTING
 CAP
 TEE
 ELBOW
 CLEANOUT

PLUMBING GENERAL NOTES:	
A.	THE DRAWINGS ARE DIAGRAMMATIC. PROVIDE ALL MATERIAL (NEW AND UNDAMAGED) AND LABOR FOR A COMPLETE AND OPERABLE SYSTEM. VERIFY ALL BUILDING MEASUREMENTS DIMENSIONS AND EQUIPMENT LOCATIONS BEFORE PROCEEDING WITH ANY OF THE WORK.
B.	REFER TO THE MECHANICAL SPECIFICATIONS FOR MATERIALS, EQUIPMENT, AND ADDITIONAL CONSTRUCTION INSTRUCTIONS NOT COVERED BY THESE PLANS.
C.	VERIFY THE EXISTING EQUIPMENT, PIPES, VALVES LOCATIONS AND SIZES THAT ARE SHOWN ON THESE PLANS AND REPORT ALL DISCREPANCIES BACK TO ENGINEER FOR EVALUATION PRIOR TO PROCEEDING WITH WORK.
D.	ALL INSTALLATIONS SHALL COMPLY WITH APPLICABLE FEDERAL AND STATE CODES INCLUDING 2014 OREGON STRUCTURAL SPECIALTY CODE (OSSC) INCLUDING APPENDIX N FOR OREGON FIRE CODE REGULATIONS, 2017 OREGON PLUMBING SPECIALTY CODE (OPSC), 2014 OREGON MECHANICAL SPECIALTY CODE (OMSC), 2014 OREGON ENERGY EFFICIENCY SPECIALTY CODE (OEEEC), AND NATIONAL FIRE PROTECTION ASSOCIATION (NFPA). WHERE TWO CODES DIFFER THE MORE STRICT OF THE TWO SHALL BE FOLLOWED.
E.	ALL PIPES, EXITING, ENTERING OR PASSING THROUGH ANY RATED FIRE WALL OR OCCUPANCY SEPARATION SHALL HAVE FIRE BLOCKING.
F.	ALL NON-PRESSURIZED DRAIN LINES (SANITARY WASTE) ARE TO HAVE A MINIMUM SLOPE OF 1/4" PER FOOT UNLESS OTHERWISE NOTED.
G.	ALL PIPING INVERTS OR ELEVATIONS ARE MEASURED TO BOTTOM OF PIPE (BOP), UNLESS OTHERWISE IDENTIFIED.
H.	ALL POTABLE WATER SYSTEM PIPING AND EQUIPMENT ARE TO BE FLUSHED AND DISINFECTED PRIOR TO COMMISSIONING AND USE, AS PER CLEANING AND COMMISSIONING REQUIREMENTS OUTLINED IN OREGON PLUMBING SPECIALTY CODE & SPECIFICATIONS.
I.	VENT PER CODE AND AS SHOWN ON DRAWINGS.
J.	ALL EXCAVATED MATERIAL SHALL BE DISPOSED OF AT AN APPROVED LOCATION. TRENCHES FOR PIPING SHALL BE SHORED AND WIDE ENOUGH FOR PROPER INSTALLATION.
K.	PROVIDE CLEANOUTS WHERE INDICATED AND PER CODE.
L.	PRIME FLOOR DRAINS/SINKS PER CODE.
M.	PROVIDE DIELECTRIC FITTINGS AT DISSIMILAR METALS PIPE CONNECTIONS.
N.	VERIFY ALL ELECTRICAL REQUIREMENTS BEFORE ORDERING EQUIPMENT.
O.	INSTALL ALL EQUIPMENT PER MANUFACTURERS' INSTRUCTIONS.
P.	CONTRACTOR TO PROVIDE ACCESS DOORS WHERE REQUIRED BY CODE.
Q.	CONTRACTOR TO FLASH AND COUNTERFLASH NEW VENT THRU ROOF WATER TIGHT.

PLUMBING FIXTURE SCHEDULE										
MARK #	FIXTURE [APPLICABLE NOTE]	[10][18]	D[1][5]	TRAP [1]	V [1]	CW [1]	HW [1]	BASIS OF DESIGN		REMARKS
WC-1	WATER CLOSET HANDICAP [9]			4	2	1		SEE SPECIFICATIONS		ADA, ELONGATED BOWL, FLUSH VALVE
LV-1	LAVATORY [8]		1 1/2	1 1/4	1/2	1/2		SEE SPECIFICATIONS		WALL HUNG VITREOUS CHINA
S-1	EXAM/TREATMENT/HAND WASH SINK [6][14]		1 1/2	1 1/2	1/2	1/2		SEE SPECIFICATIONS		COUNTER MOUNTED, STAINLESS STEEL SINK
S-2	HANDWASH SINK [6][14]		1 1/2	1 1/2	1/2	1/2		SEE SPECIFICATIONS		COUNTER MOUNTED, STAINLESS STEEL SINK
S-3	STAFF LOUNGE SINK [14][19]		2	1 1/2	1/2	1/2		RELOCATE EXISTING SINK AND FAUCET		
S-4	DENTAL UNIT [6][14]		1 1/2	1 1/2	1/2	1/2		COUNTER SINK, PROVIDED BY BURKHART DENTAL		SEE VENDOR PLANS FOR INSTALLATION
HB-1	HOSE BIBB - HYDRANT					3/4		RELOCATE EXISTING WALL HYDRANT		
HB-2	HOSE BIBB - INTERIOR					3/4		SEE SPECIFICATIONS		INTERIOR
TP-1	TRAP PRIMER [3]					1/2		PPP MP-500-115, PROVIDE WALL BOX		ELECTRONIC TRAP PRIMER
TP-2	TRAP PRIMER [3]					1/2		JR SMITH 2699		PIPE TO 1/2 IN WC/SINK CW SUPPLY LINE (MIN 1.1 GPM AT 25 PSI)
MX-1	MIXING VALVE [18]					3/8	3/8	ZURN THERMOSTATIC MIXING VALVE TMV-ZW1070XL		POINT OF USE INSTALLATION PER ASSE 1070, SET TO 110 DEG F
FS-1	FLOOR SINK [2]		4		V.L.			JR SMITH 3100		SQUARE TOP WITH SEDIMENT BUCKET
GCO	GRADE CLEANOUT							JR SMITH 4280 W/ROUND FLANGE ACCESS COVER JR SMITH 4880.		FOR OUTDOOR INSTALLATION
WCO	WALL CLEAN-OUT							JR SMITH 4402C		CAULK FERRULE WITH ACCESS COVER
FCO	FLOOR CLEAN-OUT									
AG-1	FUNNEL DRAIN WITH FIXED AIR GAP FITTING [2]	1	1 1/2	1 1/2				INDIRECT DRAIN CONNECTION		PROVIDE WITH WALL BOX AND OPEN ACCESS ENCLOSURE.
CU-1	COFFEE URN [16]									
REF-1	REFRIGERATOR CONNECTION					1/2		GUY GRAY BIM 875		
IH-1	INSTA-HOT					1/2		RELOCATE EXISTING FIXTURE		
RPBP	REDUCED PRESSURE BACKFLOW PREVENTER[11]	3/4				3/4		ZURN 975X2U LOW LEAD		PROVIDE AIR GAP DEVICE AND LEAD FREE Y-TYPE STRAINER

NOTES:

[1] CONNECTION SIZES ARE FOR INDIVIDUAL FIXTURES ONLY. PIPE SIZE TO FIXTURE SAME AS TRAP/CONNECTION SIZE SHOWN UNLESS INDICATED OTHERWISE ON DRAWINGS.

[2] PROVIDE TRAP AND TRAP PRIMER.

[3] INSTALL TRAP PRIMER 1 FT ABOVE FLR FOR EVERY 20' OF PRIMER LINE RUN DISTANCE.

[4] INSTALL IN CONFORMANCE WITH ADA REQUIREMENTS, HEIGHT 17" FROM FLR TO TOP OF SEAT.

[5] PROVIDE INDIRECT WASTE DRAIN, ROUTE TO FLOOR SINK AND DISCHARGE WITH A 2 IN AIR GAP.

[6] PROVIDE GRID STRAINER AT WASTE OUTLET.

[7] PROVIDE REMOVABLE STRAINER FOR CLEANING AND ACCESS TO THE DRAIN INLET.

[8] INSTALL IN ACCORDANCE WITH ADA REQUIREMENTS.

[9] PROVIDE HINGED OPEN-FRONT TYPE SEAT.

[10] FAUCET AND FIXTURE FITTINGS THAT SUPPLY DRINKING WATER SHALL CONFORM TO THE REQUIREMENTS OF NSF 61, SECTION 9.

[11] ROUTE FUNNEL DRAIN AND DAYLIGHT ABOVE FD/SINK.

[12] PROVIDE WASTE TRAP AND STRAINER AT WASTE OUTLET.

[13] PROVIDE BASKET STRAINER.

[14] PROVIDE WASTE LINE WALL CLEAN-OUT BELOW FIXTURE.

[15] PROVIDE WITH MIXING VALVE.

[16] PROVIDE COFFEE MAKER WATER CONNECTION IN WALL ABOVE COUNTER.

[17] -

[18] -

[19] PROVIDE FOR INSTA-HOT CONNECTION.

PLUMBING CALCULATIONS SCHEDULE											
FIXTURE UNIT COUNTS											
NEW ADDITION PLUS EXISTING BLDG											
FIXTURE TYPE	MIN. WATER OUTLET	MIN. WASTE OUTLET	NO OF FIXTURES	HOT WATER		COLD WATER		DOMESTIC WATER		WASTE & VENT	
				FIXTURE UNITS	SUM	FIXTURE UNITS	SUM	FIXTURE UNITS	SUM	UNIT DFU	SUM
DENTAL UNIT OR CUSPIDOR	1/2	1 1/4	4	0.8	3.0	0.8	3.0	1	4.0	1	4
HOSE BIBB, SILL COCK-ADDITIONAL	1/2		2			1.0	2.0	1	2.0		
KITCHEN SINK	1/2	2	1	1.1	1.1	1.1	1.1	1.5	1.5	2	2
LAVATORY	1/2	1 1/4	1	0.8	0.8	0.8	0.8	1	1.0	1	1
RECEPTORS (refrigerator, coffee urn, water stations)		1 1/2	1							1	1
SINK-BAR(INCLUDES 4 FIXTURES)	1/2	2	10	1.1	11.3	1.1	11.3	1.5	15.0	2	20
WATER CLOSET, FLUSHOMETER TANK, 1.6 GPF	1/2	3	1			2.0	2.0	2	2.0	4	4
4 FLOOR SINK			4	1						8	8
EXISTING FIXTURES (FROM AS-BUILTS TABLE)					45.2		154.8		154.8		154
TOTAL FIXTURE UNITS			21.0		61.3		174.9		180.3		194.0
TOTAL BLDG CW: FLUSH VALVE SYSTEMS	2-1/2"				GPM	57.4		GPM	87.95		
BUILDING WASTE LINE - 2% SLOPE			4								

DOMESTIC WATER PIPE PRESSURE DROP CALCULATIONS		
70.0	PSIG	MAIN PRESSURE (PSIG) - AVERAGE MINIMUM AT STREET
25.0	FT	ELEVATION GAIN FROM METER TO HIGHEST FIXTURE (FT)
	59.25	PSIG PRESSURE FOR METER SIZING
4.0	PSIG	METER LOSS
17.0	PSIG	REDUCED PRESSURE BACKFLOW PREVENTER LOSS
20.0	PSIG	REQUIRED PRESSURE AT FURTHEST FIXTURE
403.0	FT	EQUIVALENT LENGTH FROM METER TO FURTHEST FIXTURE
18.2	PSIG	PRESSURE AVAILABLE FOR PIPE SIZING
10.40	FT/100FT	FRICTION FACTOR
4.51	PSI/100FT	PIPING MAX PRESSURE DROP

MEDICAL GASES AND EQUIPMENT:

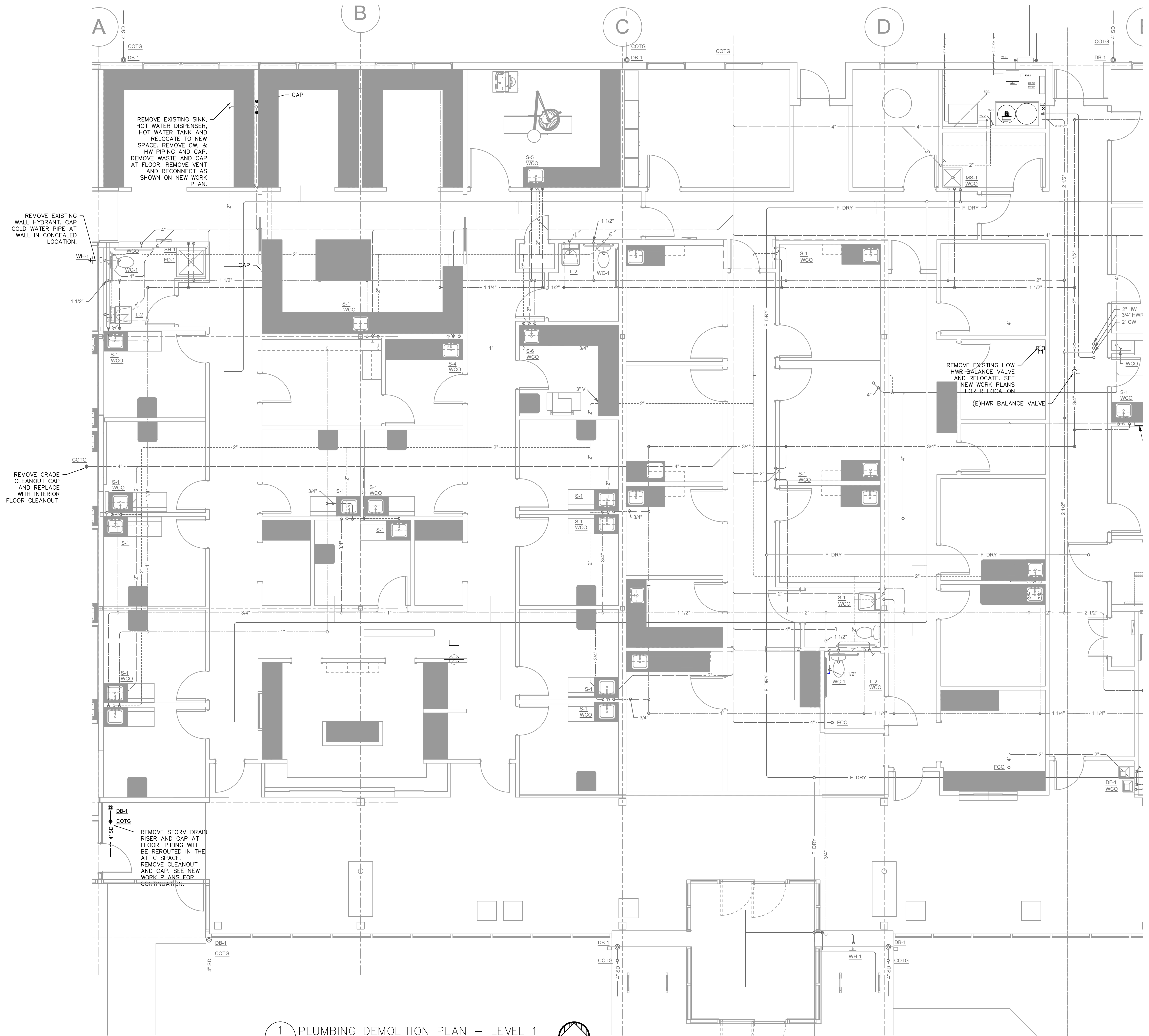
A. FOR MEDICAL EQUIPMENT, GAS ZONE VALVES, GAS STORAGE TANKS, COMPRESSOR, VACUUM PUMP, DENTAL UNITS, GAS PIPING, ETC, SEE BURKHART DENTAL PLANS AND SPECS FOR REQUIREMENTS.

SOLIDS INTERCEPTOR TANK SCHEDULE	
DESIGNATOR	SLT-1
SYSTEM TYPE	SOLIDS INTERCEPTOR
STYLE	UNDERCOUNTER
AREA SERVED	CASTING ROOM
LIQUID CAPACITY - GALLONS	1.2
TANK CONSTRUCTION MATERIAL	HDPE
TELEGLIDE RISER	N/A
SCREEN FILTER	3/16 IN
COVER DIAMETER - IN	11
COVER TYPE	N/A
WASTE INLET CONNECTION - IN	1 1/2
WASTE OUTLET CONNECTION - IN	1 1/2
BASIS OF DESIGN, MODEL#	STRIMCO USI-1180-1
UNIT DRY WEIGHT (LBS)	8
UNIT WET WEIGHT (LBS)	18
SEE NOTES	1,2,3,4,5
REMARKS	
1. PROVIDE TOP ACCESS INTERCEPTOR.	
2. INSTALL BELOW SINK WITH BOTTOM SUPPORT.	
3. ALLOW 11 IN ACCESS CLEARANCE ON TOP OF INTERCEPTOR.	
4. PROVIDE DEVICE RATED FOR PLASTER & CLAY/HEAVY SOLIDS.	
5. FLOWRATE BASED ON 1/4 IN / FT SLOPE, N=0.012 IN, AND HALF PIPE FLOW.	
6.	





1
5'-0"
12'-1"
2
3
4
5



REMOVE EXISTING
WALL HYDRANT, CAP
COLD WATER PIPE AT
WALL IN CONCEALED
LOCATION.

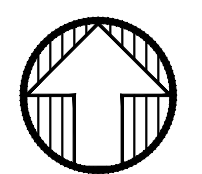
REMOVE GRADE
CLEANOUT CAP
AND REPLACE
WITH INTERIOR
FLOOR CLEANOUT.

REMOVE STORM DRAIN
RISER AND CAP AT
FLOOR. PIPING WILL
BE REROUTED IN THE
ATTIC SPACE.
REMOVE CLEANOUT
AND CAP. SEE NEW
WORK PLANS FOR
CONTINUATION.

REMOVE EXISTING SINK,
HOT WATER DISPENSER,
HOT WATER TANK AND
RELOCATE TO NEW
SPACE. REMOVE CW, &
HW PIPING AND CAP.
REMOVE WASTE AND CAP
AT FLOOR. REMOVE VENT
AND RECONNECT AS
SHOWN ON NEW WORK
PLAN.

REMOVE EXISTING HW
R-BALANCE VALVE
AND RELOCATE. SEE
NEW WORK PLANS
FOR RELOCATION.
(E)HWR BALANCE VALVE

1 PLUMBING DEMOLITION PLAN - LEVEL 1
P1.11 SCALE: 1/4" = 1'-0"



Wallowa MOB Addition
Wallowa County Healthcare District
603 Medical Pkwy, Enterprise, OR 97628



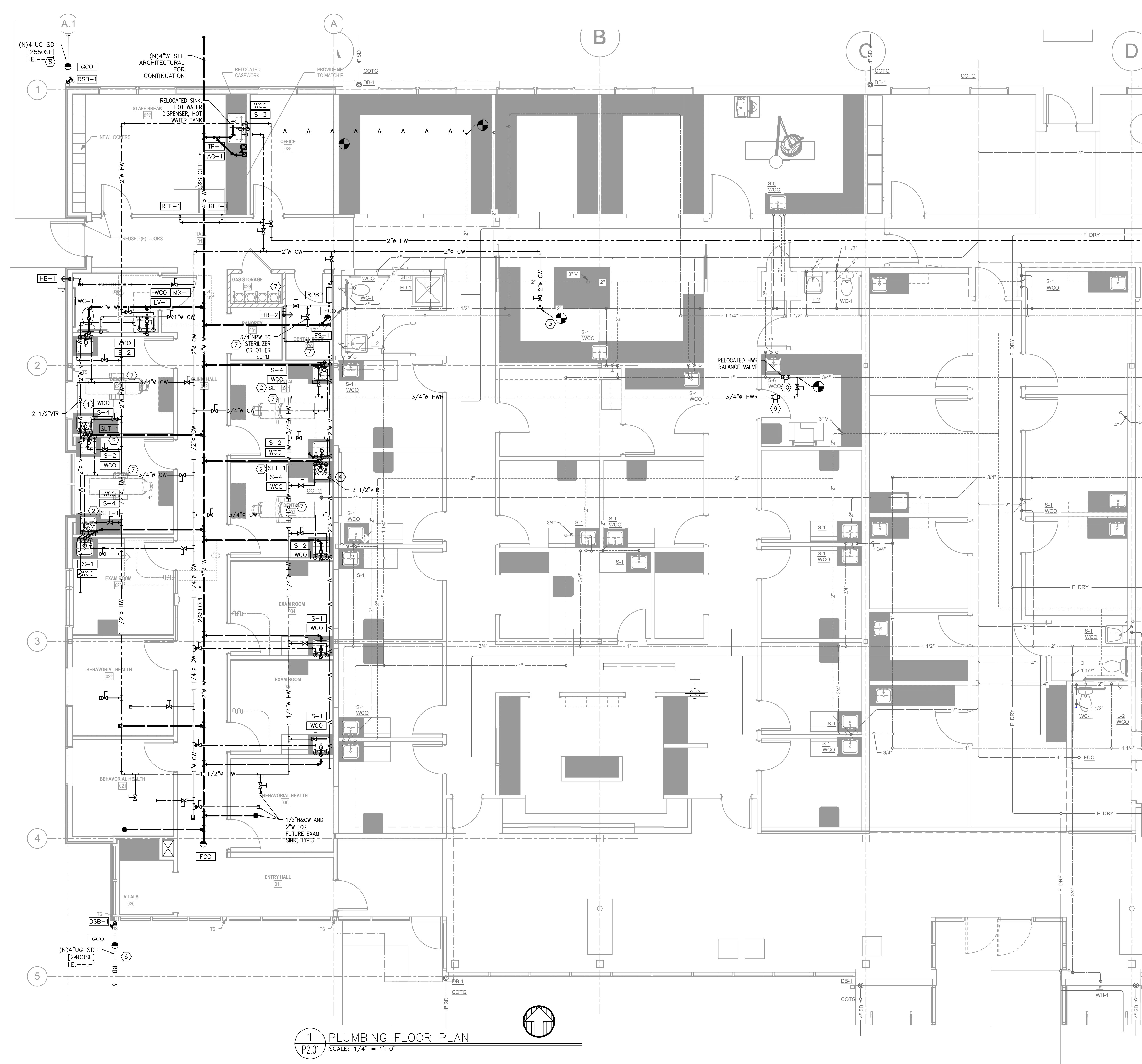
ISSUE DATE: 01.25.2019
REVISIONS:

FLOOR PLAN - LEVEL 1
PLUMBING DEMOLITION

P1.11

META Consulting Engineers
2007 S.E. Ash St
Portland, OR 97214
PH: (503) 234-0548
FAX: (503) 234-0577
WWW.META-ENG.COM
CONTACT: Mariana Galofteanu

Bid / Permit Set



- GENERAL NOTES:**
- VERIFY ALL EXISTING CONDITIONS RELATIVE TO THE SCOPE OF WORK. DO NOT FABRICATE W/O CONFIRMING SPACE EXISTS, FOR SIZES REQUIRED.
 - COORDINATE ALL PLUMBING WORK WITH GENERAL CONTRACTOR, CONTROL CONTRACTOR, ELECTRICAL AND ARCHITECTURAL.
 - ROUTE BUILDING SEWER WITH 2% SLOPE.
 - PROVIDE ACCESSIBLE WATER HAMMER ARRESTOR ON EACH FLUSH VALVE SUPPLY LINE.
 - PROVIDE 2 INCH MINIMUM WASTE LINE FOR UNDERGROUND INSTALLATIONS.
 - PROVIDE ACCESSIBLE WATER HAMMER ARRESTORS ON EACH FLUSH VALVE SUPPLY LINE.

- (X) PLUMBING KEY NOTES:**
- UNDERCOUNTER SOLIDS INTERCEPTOR, SEE DETAIL 8/P6.01.
 - NEW CLINIC DOMESTIC COLD & HOT WATER SUPPLY. PROVIDE ACCESSIBLE SHUT-OFF VALVE.
 - VENT UP TO ROOF.
 - PROVIDE THERMOSTATIC MIXING VALVE AT PUBLIC LAVATORY.
 - RAIN DRAIN DOWN TO UNDERGROUND. PROVIDE DOWNSPOUT BOOTH AND GRADE CLEAN-OUT TO MATCH EXISTING. PROVIDE 2% SLOPE ON HORIZONTAL RUNS. SEE DETAIL 6/P6.01.
 - MEDICAL GASES AND EQUIPMENT BY OTHERS. SEE BURKHART DENTAL DRAWINGS FOR DESIGN REQUIREMENTS OF O2 N2O MA AND VACUUM PIPING, DENTAL SINKS, STERILIZERS, VACUUM PUMP AND COMPRESSORS.
 - ROUTE COLD, HOT WATER AND HOT WATER RECIRCULATION PIPING ABOVE THE CEILING.
 - PROVIDE HOT WATER RECIRCULATION ZONE BALANCING VALVE AND SHUT-OFF VALVE.
 - EXISTING HOT WATER RECIRC BALANCE VALVE. REBALANCE WATER FLOW PER SCHEDULE.

1 PLUMBING FLOOR PLAN
P2.01 SCALE: 1/4" = 1'-0"

Wallowa MOB Addition
Wallowa County Healthcare District
603 Medical Pkwy, Enterprise, OR 97628



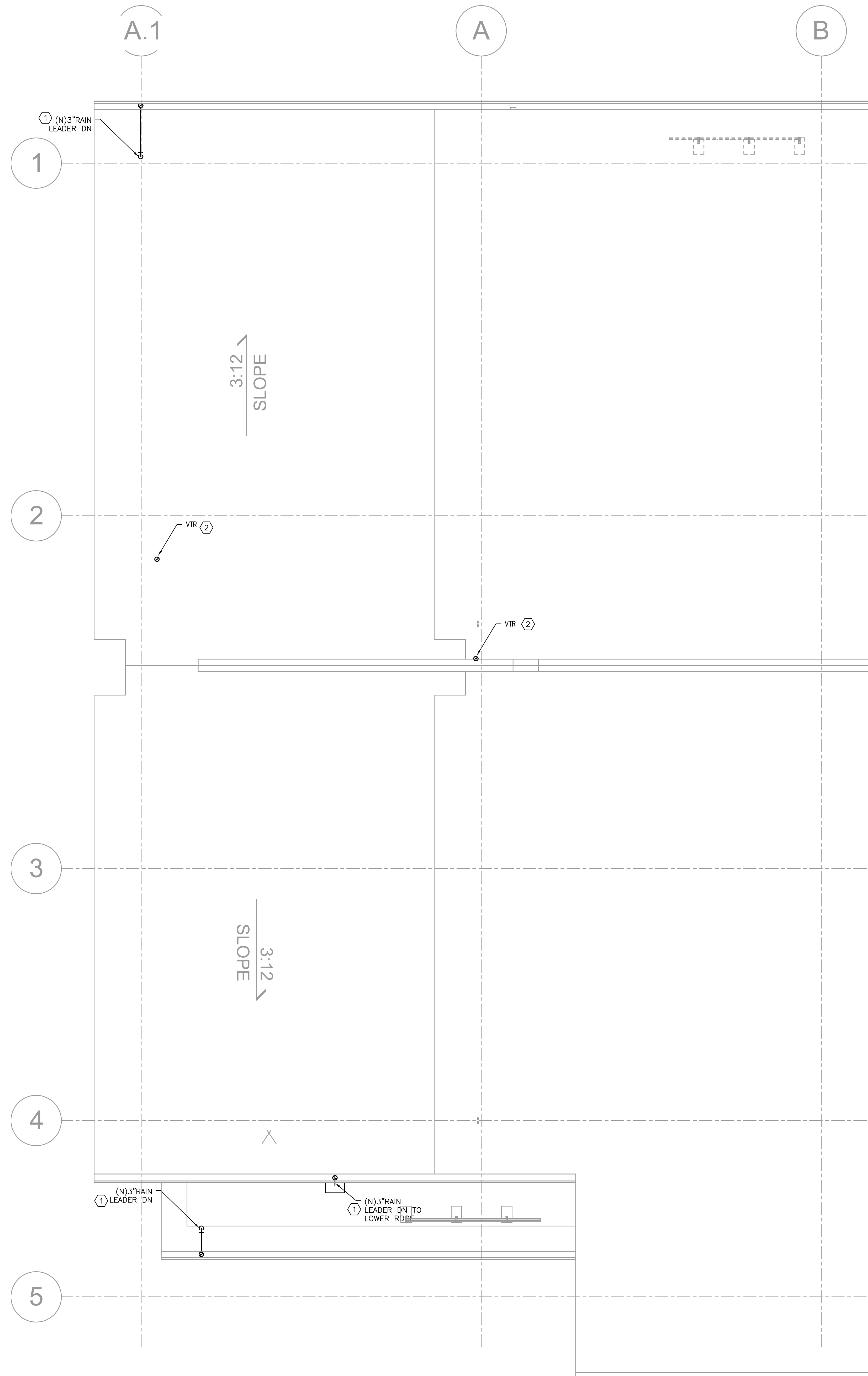
ISSUE DATE: 01.25.2019
REVISIONS:

FLOOR PLAN - PLUMBING

P2.01

META Consulting Engineers
2007 S.E. Ash St
Portland, OR 97214
PH: (503) 234-0548
FAX: (503) 234-0577
WWW.META-ENG.COM
CONTACT: Mariana Galofteanu

Bid / Permit Set



1 PLUMBING ROOF PLAN
 P2.02 SCALE: 1/4" = 1'-0"

GENERAL NOTES:

- A. VERIFY ALL EXISTING CONDITIONS RELATIVE TO THE SCOPE OF WORK. DO NOT FABRICATE W/O CONFIRMING SPACE EXISTS, FOR SIZES REQUIRED.
- B. COORDINATE ALL PLUMBING WORK WITH GENERAL CONTRACTOR, CONTROL CONTRACTOR, ELECTRICAL AND ARCHITECTURAL.

PLUMBING KEY NOTES:

- 1. PROVIDE 12W/LF SELF-REGULATING DE-ICING HEATING CABLE AT NEW GUTTERS AND DOWNSPOUTS EXTENDING 24 INCH BELOW GRADE. PROVIDE RAYCHEM OR APPROVED EQUAL ICESTOP SYSTEM WITH AUTOMATIC MOISTURE TEMPERATURE SENSOR, AERIAL SNOW SENSOR, CONTROL PANEL AND GUTTER SENSOR. COORDINATE WITH ELECTRICAL FOR POWER REQUIREMENTS AND CIRCUITING.
- 2. VENT THROUGH ROOF.



Wallowa MOB Addition
 Wallowa County Healthcare District
 603 Medical Pkwy, Enterprise, OR 97628

ISSUE DATE: 01.25.2019
 REVISIONS:

MARIA GALOTESCU
 Consulting Engineers
 2007 S.E. Ash St
 Portland, OR 97214
 PH: (503) 234-0548
 FAX: (503) 234-0677
 CONTACT: WWW.MPIA-ENG.COM

ROOF PLAN - PLUMBING

P2.02

